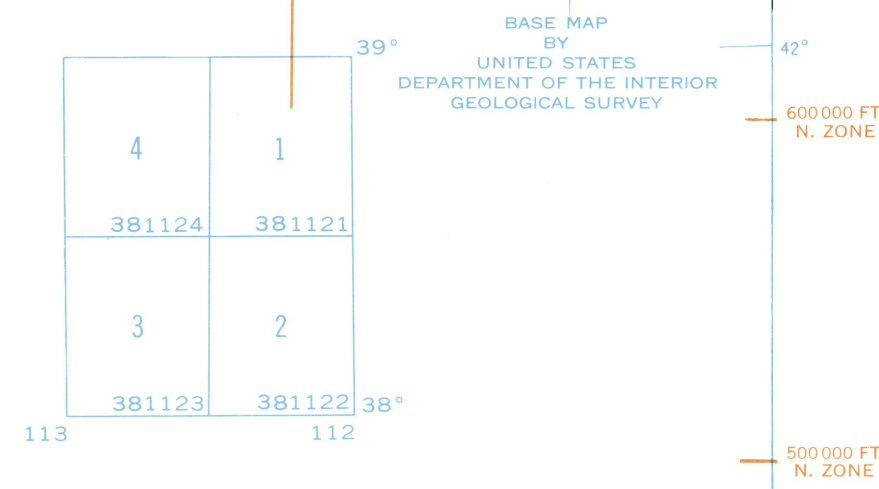


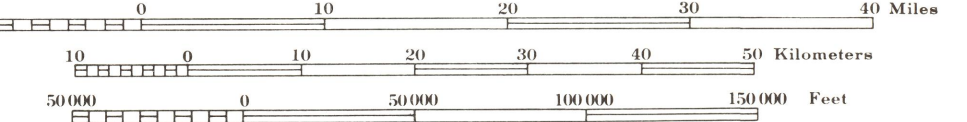
U.S. DEPARTMENT OF COMMERCE
NATIONAL OCEANIC AND ATMOSPHERIC ADMINISTRATION
NATIONAL GEODETIC NETWORK
WASHINGTON, D. C.
July 1971
**TRIANGULATION DIAGRAM
STATE OF UTAH**



Each 30 minute quadrangle (shown in blue) is identified in the southeast corner by a six digit number showing successively degrees of latitude, degrees of longitude, and position in its one degree quadrangle.

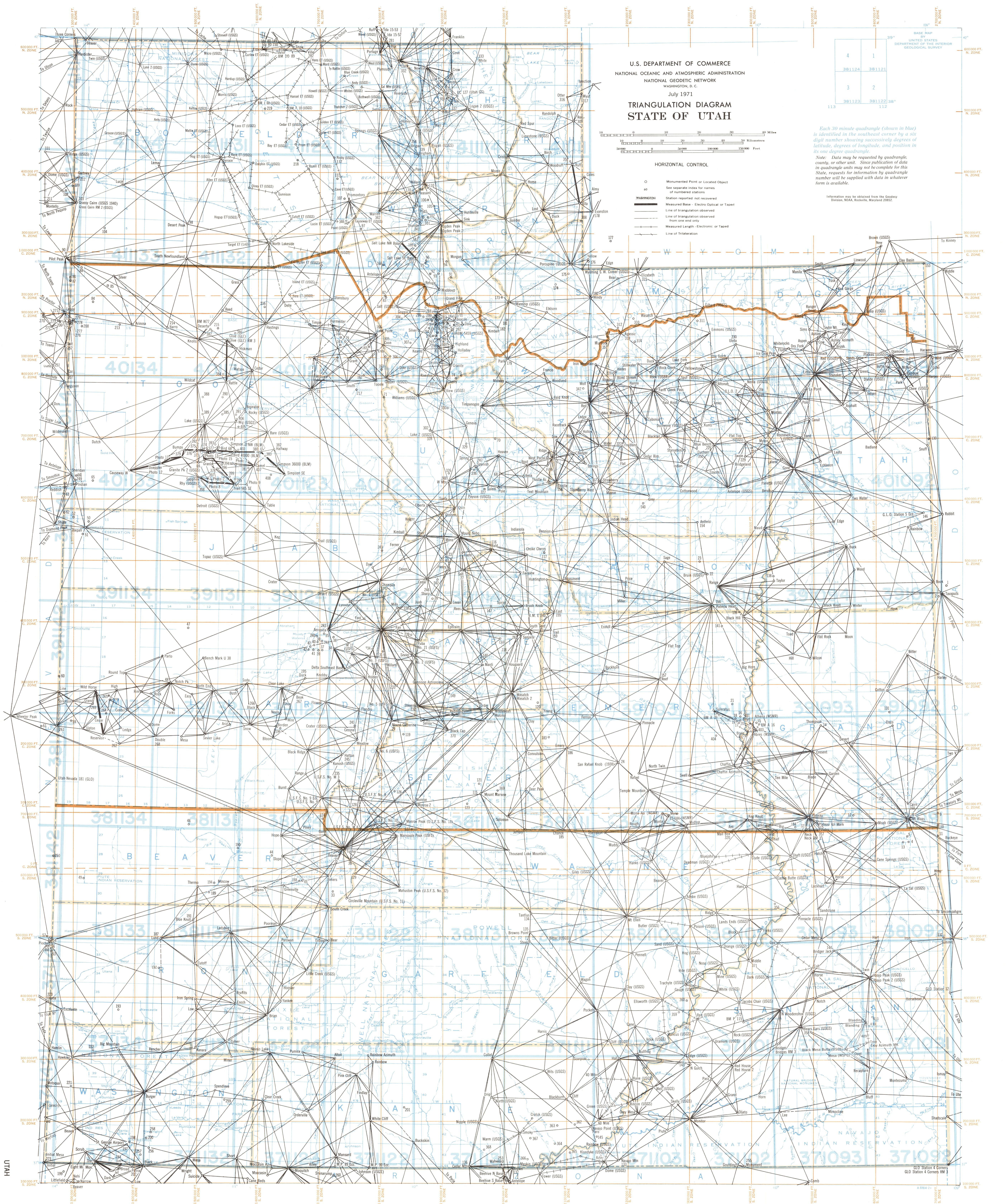
Note: Data may be requested by quadrangle, county, or other unit. Since publication of data in quadrangle units may not be complete for this State, requests for information by quadrangle number will be supplied with data in whatever form is available.

Information may be obtained from the Geodesy Division, NOAA, Rockville, Maryland 20852.



HORIZONTAL CONTROL

- Monument Point or Located Object
- Station reported not recovered
- Measured Base - Electro Optical or Tape
- Line of triangulation observed from one end only
- Measured Length - Electronic or Taped
- Line of Triangulation



UTAH

UTAH